

WEEKLY EXPRESS

A MESSAGE FROM MRS TAI

Dear families,

We are so proud of Y6 who completed their SATs assessments this week.

Their determination, strength and good humour meant they tried really hard and we are so proud of them! A big thank you to Mrs Boyden, Miss Shaikh, Mrs Bartkiw and Mrs Medlock who have taught Y6 and everyone who helped support the children this week and others.

Children have been having a fantastic time in the garden - please see the back pages for photos of some of the work they have been doing. They are learning so much about plants, the natural world and exploring our outdoor spaces. We look forward to welcoming parents in to the garden for a special open day- please look out for details coming soon.

We look forward to seeing Y1 parents at the upcoming phonics carousel activities on Wednesday 21st May from 2:45pm. A wonderful opportunity to come and see how your child learns phonics and take part in some activities together.

Don't forget to buy your tickets for the Games Night for your child on Thursday 22nd May - a fun-filled afternoon with a variety of different games, competitions and activities to take part in with their friends. Tickets cost £2.50 and are available on Parent Pay or cash at the office.

Have a wonderful weekend.

Mrs Tai



'TOO-COOL' THURSDAYS

Come and buy an ice-lolly or two from the stall in the calm cabin gazebo on the KS2 playground every Thursday until the end of term. All lollies will be 50p and will consist of a selection of family favourites.

All money raised will help fund our Y6 leaver's events. Thanks for your support.



SPORTS DAY - 5TH JUNE

We are looking forward to our Sports Day on Thursday 5th June. EYFS and KS1 will take part in their events on the school field from 10am and KS2 from 2pm. We would like to invite friends and family to join us but ask that when you are on school grounds, you are dressed in appropriate clothing, do not bring any food or drink on to the site and support your children in their events respectfully.

It will be a great opportunity for children to showcase their sporty talents and earn points for their house. An overall house winner will be announced at the end of the day. See you there!



HOUSE POINTS

PEAKE

21,824

STOREY

21,255

22,140

RASHFORD

21,935

PANKHURST



WEEKLY WINNERS

Congratulations to our Stars of the Week and Caught Being Kind winners this week.

Star of the Week:

Caught being Kind:

Capella Class: Oscar

Capella Class: Lily-Mae

Vega Class: Reo

Vega Class: Nevaeh

Arcturus Class: Leo

Arcturus Class: Luna

Rigil Class: Noah

Rigil Class: Hanna

Canopus Class: Arya

Canopus Class: Ryan

Sirius Class: All of Year 6

Sirius Class: Tiffany

WOW class of the month: Well done Sirius Class for being the WOW walk to school winner for April!

Well done to Arcturus for winning the Attendance Award this week with 97.9% Keep it up!



IMPORTANT DATES

Wednesday 21st May - Year 1 Phonics Carousel - join your child for an afternoon of phonics activities. From 2:45pm

Thursday 22nd May - Games Night for children. EY/KS1 @ 2pm / KS2 @ 3:20pm

Mon 26th-Fri 30th May - Half Term

Thursday 5th June - Sports Day EYFS/KS1 @ 10am and KS2 @ 2pm

Friday 6th June - Tempest Photography - Class Photos

10-17th June - Scholastic Book Fair in the MUGA after school

Friday 13th June - Special Persons Child & Parent event

Thursday 19th June - Music on a Summer's Afternoon concert

Tuesday 8th July - KS2 production

CLASSROOM HIGHLIGHTS

CLASS CAPELLA

Children in both Nursery and Reception are developing their own learning skills and independence within the provision. We have seen lots of children extending their own learning either by following on whole or small group learning on their own or accessing the areas of provision to further their learning. Here two children have had a go at independent name writing and also using our displays as a visual for making their own number line!



CLASS VEGA

We have enjoyed playing target games and working together to score points.

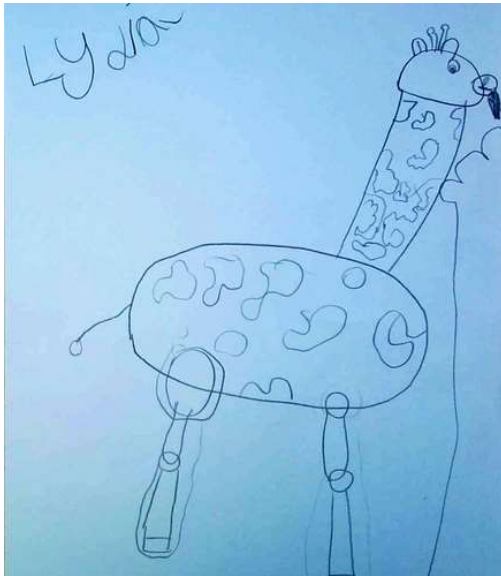


CLASSROOM HIGHLIGHTS CONT.



CLASS ARCTURUS

This week in Arcturus, we have been sketching different animals from the Savanah



CLASS RIGIL

Here we have Rigil Class doing a fantastic job in their class assembly, sharing all their knowledge on the Romans.



CLASS CANOPUS

Here we have Canopus class learning about seed dispersal up in the school garden. They found out about seed dispersal using wind and water. We used bubbles with flower hats, and drain pipes and jugs of water.



CLASS SIRIUS

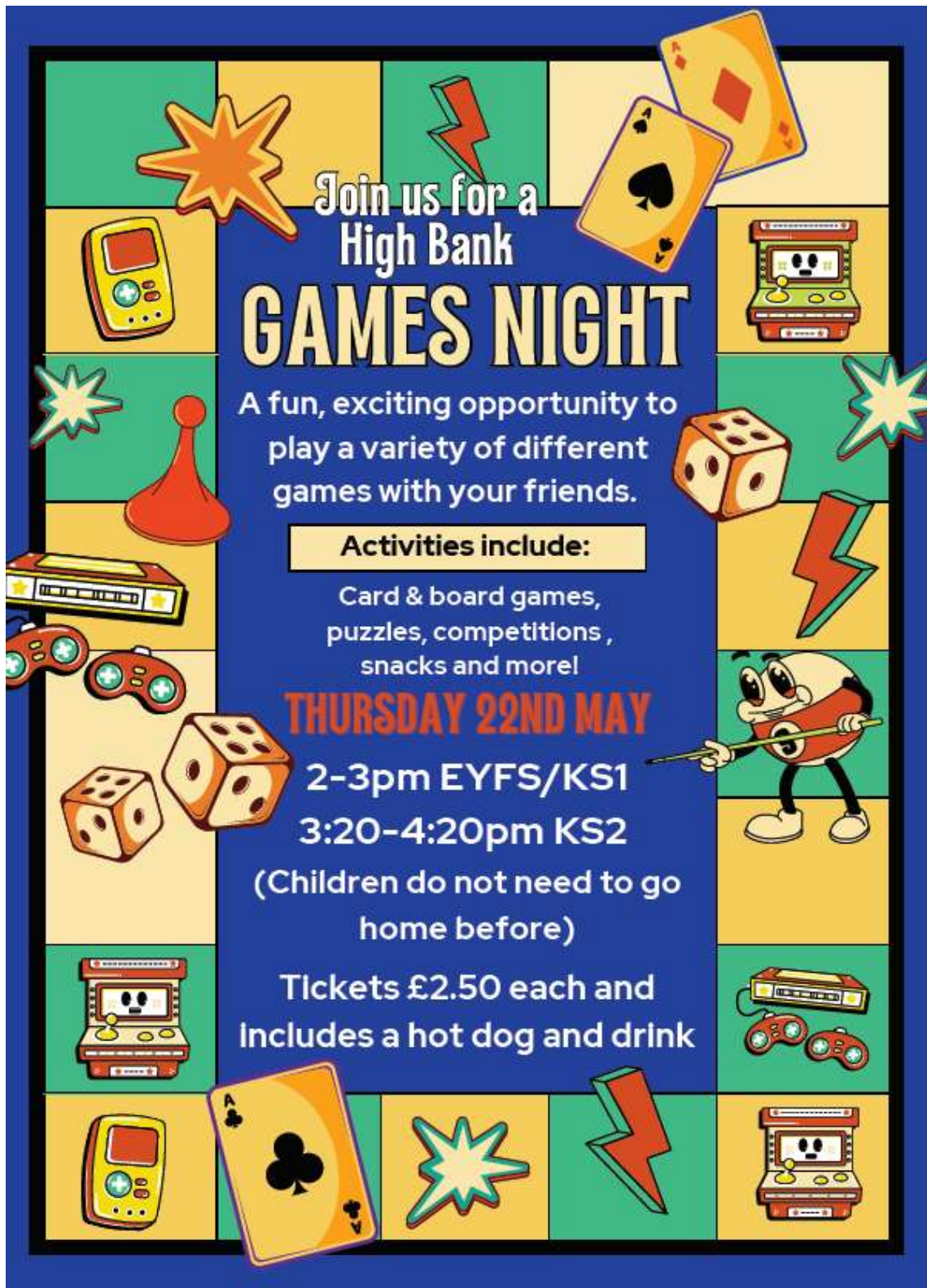
Year 6 have survived SATs week! They have worked really hard, persevered and we are proud of every one of them. Well done!



HIGH BANK JIN WEEKLY EXPRESS

GROW TO SCHOOL HIGHLIGHTS







High Bank's Summer Dates

Thursday 8th May VE Day - children can come dressed to school in red, white or blue and learn about the history of VE Day.	W/C 12th May KS2 SATs week - you can do it Y6! Y6 SATS breakfast 08:20 M-Th
Wednesday 21st May Y1 phonics carousel for parents - come and join your child for an afternoon of phonics activities. From 2:45pm	Thursday 22nd May Games Night - children can join us for an exciting Games session - ticket info to follow. EY/KS1 @2pm KS2 @3:20pm
Thursday 5th June Sports Day 10am EY/KS1 2pm KS2	10-17th June Scholastic book fair @ High Bank - come and grab a bargain book (or two!) and earn some money for our school.
Friday 13th June Special Person's Child and Parent event - please join your child for a special planting activity in celebration of Father's Day.	Thursday 19th June Music on a Summer's Afternoon Concert - for all the family. Children from Rec-Y6 will perform a medley of musical acts. 1:30pm
Tuesday 8th July KS2 end of year performance 10:00am and 4:30pm Ticket details to follow.	Thursday 10th July Confirmed date: Rec- Y6 trip to The Great Yorkshire Show.
Friday 11th July 9:30am Year 6 Leaver's Assembly Families of Y6 are invited to join us for a final farewell assembly.	Friday 11th July Summer Fayre 3:30-5:00pm - Games, raffle, donkeys, inflatables - a fun filled afternoon for all the family.